

www.thestagedepot.com

Easy-Lite Portable Stages

EASY-LITE PORTABLE STAGES

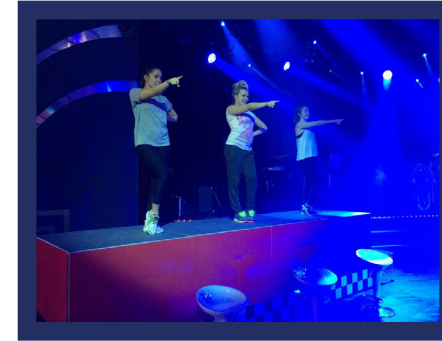


QUICK-FACTS

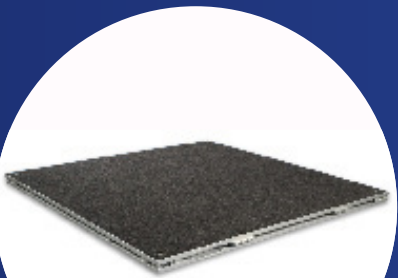
- Lightweight, accordian style modular staging system
- Most Compact storage. Stores in a (4' x 4') foot print.
- Fast, easy set-up by 1 person.
- Perfect for schools, churches, hotels, exhibition halls and many other applications.
- Weight rated at (153.5 lbs/sq Foot)
- Stronger than traditional staging because stage risers (legs) have 9 points of contact on each stage panel making panels ultra stable

WWW.THESTAGEDEPOT.COM CALL: 877-884-3426

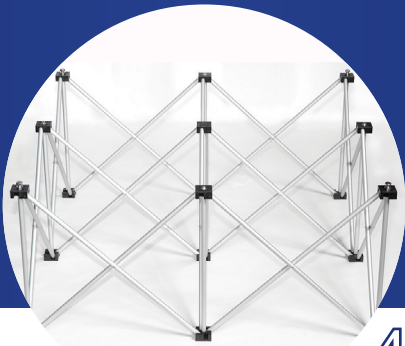
The Possibilities are Endless!



1...pick a platform
shape and size



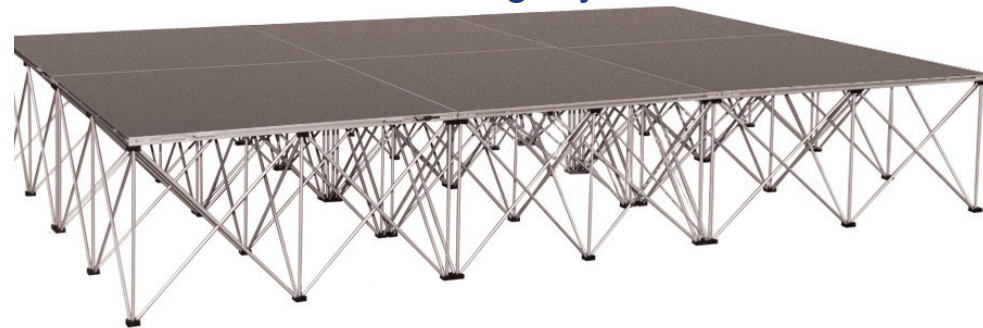
2...choose a riser
height (32", 24", 16", or 8")



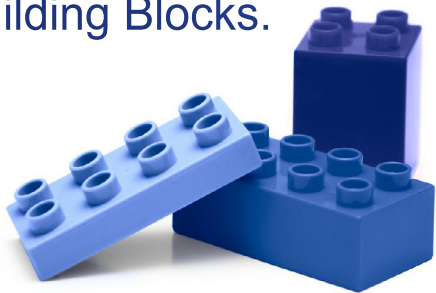
3...connect
together using our
hex-key



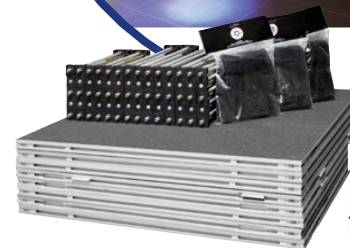
4...connect multiple
sections to build the size, shape
and height you need.



Easy-Lite is modular
and works like
Building Blocks.

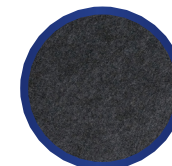


Perfect for indoor or outdoor
flat-ground applications (dry weather only)

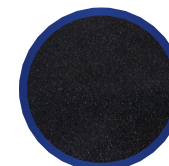


Most Compact storage in the
Industry. Stores in a 4' x 4'
foot print.

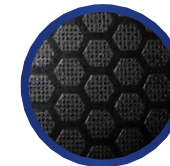
3 finishes to choose from:



Carpet



Tuffcoat



Industrial

Super Strong!
Supports up to 154lbs per
square foot

Fast, easy set-up
by one person.

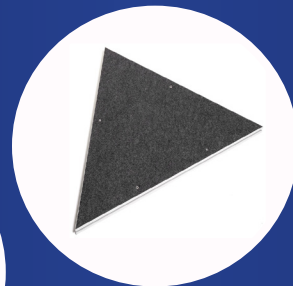
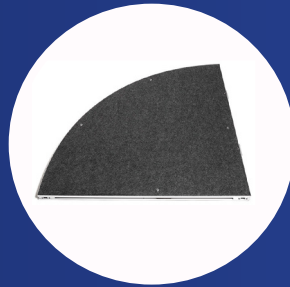


WWW.THESTAGEDEPOT.COM CALL: 877-884-3426

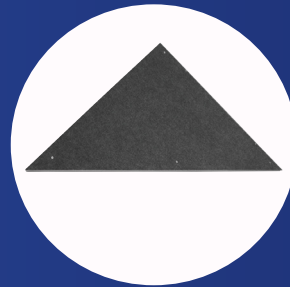
Platform shapes



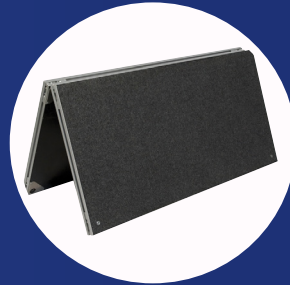
4' Quarter Round



4' Equilateral Triangles



4' Right Triangles



4'x4' Square Foldings



Drum Risers
& DJ platforms



Camera Platforms



Circles and Catwalks



Square (4'x4' or
3' x 3')

How Risers and Platforms Work Together to Create Your Dream Stage. Our unique accordion-style folding stage risers are lightweight, compact and strong and are constructed from premium aluminum, brass and industrial grade plastic. Our Stage platforms feature a multiple layer sandwich construction (9mm high-density plywood/7.5 mm honeycomb grid / 4mm high-density plywood) with an aluminum profile on all sides, each platform can support up to 153lbs/sq. ft. Risers lock securely into our stage platforms via special platform locking mechanisms. Stage platforms lock to other platforms using a special hex key and platform to platform connectors built into the sides of each platform.

Risers heights



32" High



24" High



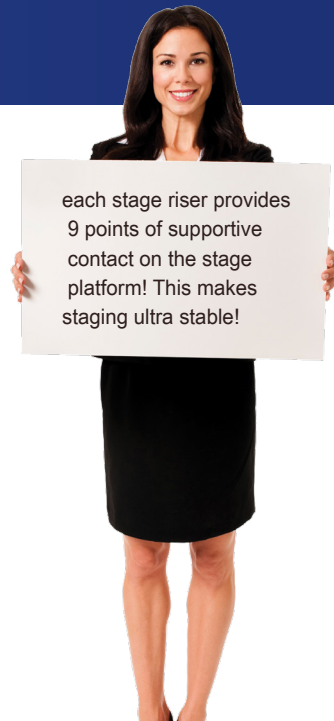
16" High



8" High

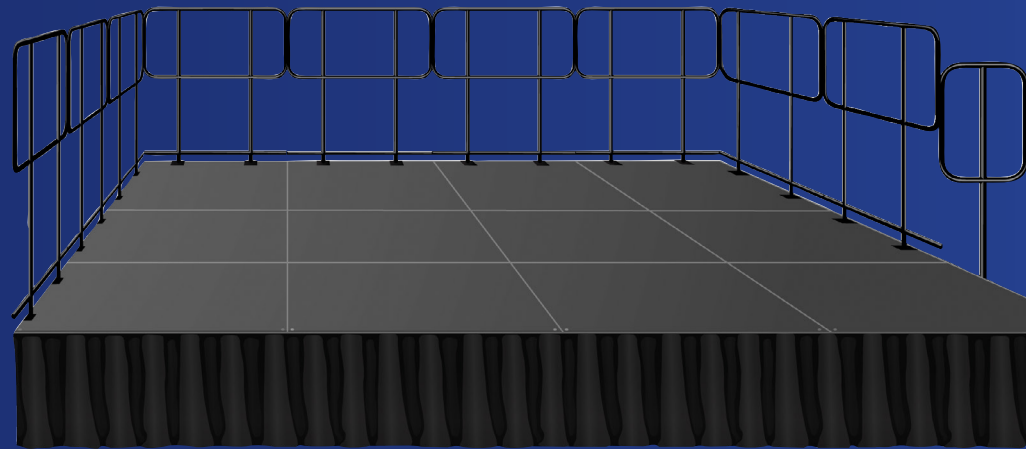
*Risers can be stacked on top of one another in various height combinations up to 64" high using our optional ISREK riser coupler (never stack more than 2 risers high).

each stage riser provides 9 points of supportive contact on the stage platform! This makes staging ultra stable!



Available in pre-packaged kits for your convenience or we can help you design custom stage that will fit your needs!

Mix and Match to create the stage you need. If your needs change, so can your stage!



Storage options

The Most Compact
Storage in the industry
and the most storage
options to choose from!



Stack in a 4' x 4'
footprint or use our
storage cases or
trolleys.



Cases fit 6 platforms and 6
risers, hardware, clamps and skirts.
Available for 4'x 4' stage systems and
3'x 3' stage systems.



Trolley holds either guard
rails or ramp parts (ramp metal
frames and adjustable legs).



Caster Boards
hold up to 24 stage platforms.
Available for 4'x 4' and 3'x 3' stage systems.
Can also hold metal frames and legs for
stage ramps.



Dolly holds 4 risers and
4 platforms. Allows the user to
wheel them from place to place.
Fits in a car.

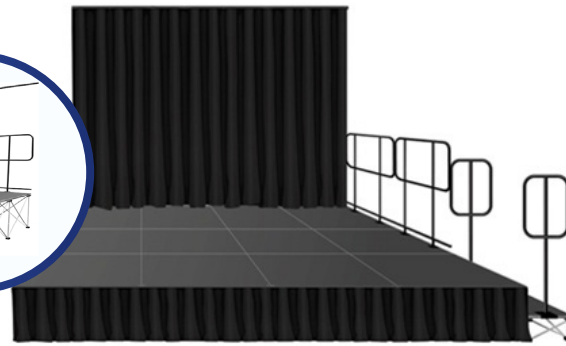
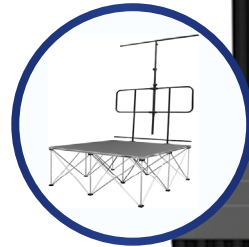


Accessory Cases hold up to 18
risers and skirts. Available for 4'x 4' and 3'x
3' stage systems. Can stack on top of Caster
Boards.

Choose from
several storage and
transportation
options



ACCESSORIES



Back Drops

work with existing Intellistage guard rails, and install onto our standard Intellistage™ 4' x 4' guard rail panels. Back drops are sold in modular 4' sections allowing design flexibility to fit nearly any size stage. They are adjustable in height from 5' to 12' high depending on your needs. Stage curtains are available in 8' x 4' wide panels and are made of a black fire retardant material.

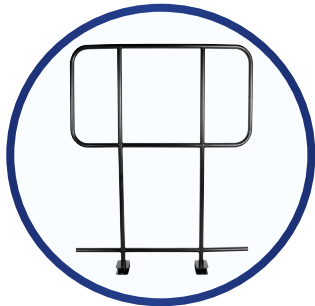


Stage Step

kits are available in several heights to compliment your stage

RAMPS

Equipment and wheel chair ramps are available in carpet, tuff coat or industrial finishes. Intellistage™ ramps modular design allows for maximum installation flexibility. They can be attached straight on, on the side with a landing and in switchback or 90 degree angle configurations for optimal usage of available installation space. All wheel chair ramps come standard with guard rails and guard rail options are available for 34" and 32" high equipment ramps.



Guard Rails

are available for 4' x 4' platforms and step platforms and include built in chair stops.



Stage Skirts

are available in 8' panels, these perfect little black accessories are available in 8", 16", 24" and 32" lengths. Skirts are fire rated and snap on to your stage using skirt clips.

ACCESSORIES



Mobile Stage Kits

Any of our stages or drum risers can be made mobile by fitting them with our mobile stage kit. We created metal frames that are designed to fit onto the bottom of our stage risers. Special 3 1/2" wheels with and without brakes then attach to these frames. The result is a fully mobile stage that can be wheeled from place to place without being disassembled.



Riser Leveling Cups

are designed to help compensate for uneven ground up to 1' high, these stacking cups fit on the bottom side of riser feet and snap together with other stacking cups in order to allow you to level out your stage. Available in packs of 25.



Riser Extension Hardware

allows you to stack any two risers together so you can change the height of your stage (up to 64" high). Do not stack more than 2 risers on top of one another. NOTE: 8" risers can only be placed on the bottom and will not work as the top riser and you cannot stack 8" risers on top of 8" risers).



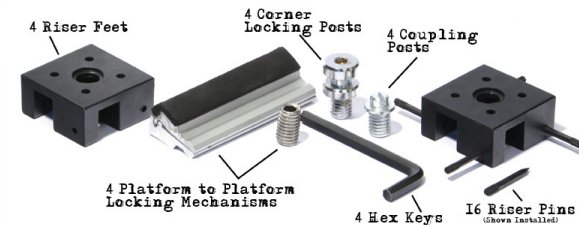
Connecting Hardware for Steps

Connecting hardware to connect various heights of platforms and steps. Available in a 4 pack.



Chair Stops

ascending and descending chair stops are available for our 4' x 4' and 3' x 3' stage platforms as well as our step



Extra Parts

Our extra parts kit contains: 4 corner locking posts, 4 coupling posts, 4 riser feet, 16 riser pins, 4 hex keys and 4 platform to platform locking mechanisms.